

# The PhilateliKid

**The newsletter for Stamp Collecting Clubs for Kids (SCCFK)**

**Collect Stamps (The Most Educational Hobby)**

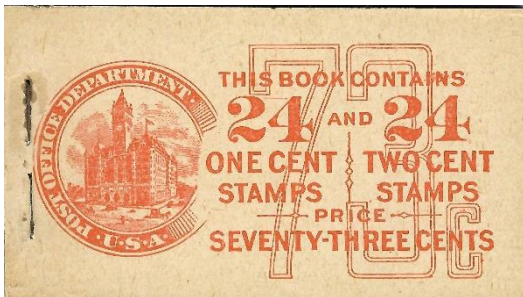
[www.stampcollectingclubsforkids.org](http://www.stampcollectingclubsforkids.org)

January 1, 2023

## Catalogs, Part 8

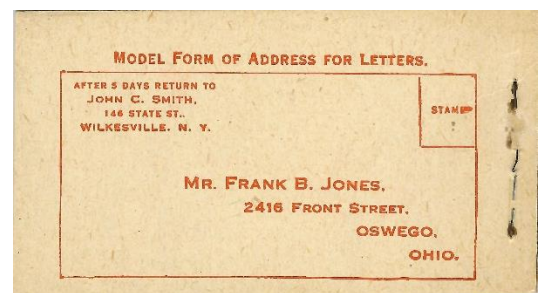
In the May 2022 issue of *The PhilateliKid*, we began brief descriptions of various “Back of the Book” (“BOB”) listings in the Scott Catalogues. We looked at stamps which begin with the letter “B,” “C,” “CE,” “CL,” “CM,” “CB,” “CO,” “E,” “D,” “F,” “FA,” “J,” “K,” “O,” “PR,” “PN,” “PS,” and “WS.” This month we look at stamps with the prefix “BK.”

**Stamps Beginning with the prefix “BK.”** The prefix “BK” is used by Scott to identify booklets. A booklet is a group of 3 to 20 stamps on a small pane which is sold as a convenience to the public. Originally booklets contained one or more of these panes with a cover and a back cover to protect the enclosed stamps. They were sold by post offices beginning in 1900, and still may be purchased to this day. If more than one pane of stamps was included in a booklet, often a blank page was inserted to separate the panes and prevent them from sticking together. Originally booklets were assembled using a small staple(s) to attach the front cover, panes, blank pages, and back cover. However, modern booklets often do not have a front and back cover, and no blank pages, and are just one single pane. They sometimes have self-adhesive stamps on both the front and back of the



**Front Cover BK 56**

pane. The front and back covers (“covers”) normally contain explanation of the contents, and sometimes contain advertising, making them interesting, collectible

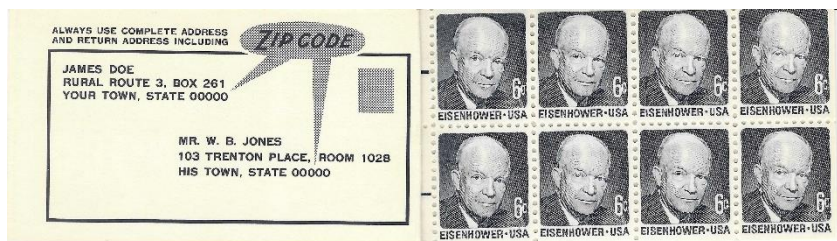


**Back Cover BK 56**

items. In the case of modern panes, normally, there is a section, on at least one side, that explains the quantity, price, and other information. In the selvedge of the panes can often be found a tiny number. That is the plate number for that pane. Sometimes a small premium is charged above the face value of the stamps to cover the additional cost of the booklet.

Note: In the booklet pictured above, Scott BK 56 issued by the Post Office in 1917, there were 24 stamps denominated 1¢ each (4 panes of six 1¢ stamps) and also included were 24 stamps denominated 2¢ each (4 panes of six 2¢ stamps.) The 24 - 1¢ stamps therefore had a face value of 24¢, and the 24 - 2¢ stamps had a face value of 48¢. Combined, the face value of the 48 stamps was 72¢, but the booklet had a 1¢ premium and therefore was sold for 73¢.

## Inside of the Front and Back Covers



The Post Office realized that the inside of the front and back covers could be



Inside of Front Cover ^ used for advertisement and information. Inside of Back cover ^

## Slogans

Sometimes the number of stamps included in a full pane of booklet stamps left a blank space where no stamp would be.



In that blank space, where there was NOT a stamp, a slogan was placed.

Sometimes, different slogans were used for the same pane of stamps. Although the slogan “stamps” could not be used for postage, they created a different collectible. Here are three of the exact same pane of stamps, but with different slogans. As a collecting challenge, try to find one of these booklet stamps with the adjacent slogan “stamp” attached and canceled on a cover!



## Stamp Collecting Stamps

In 1986 four different stamps were issued in booklet form only that commemorated stamp collecting. (Scott 2198 – 2201.) These panes shown below are NOT identical. Look carefully at the green stamps. The pane on the top has the normal printing, which includes black ink. The black ink was accidentally omitted from the bottom pane, resulting in the



postmark and cancel missing. That makes these two panes different collectibles. Also note the tiny number 1 in the left-hand selvedge. That is the plate number.



## Foldable Booklets

Booklets are now issued without a front and back cover. They are designed to be folded in half. Stamps are on both sides of the pane. Because these are self-adhesive stamps, they are sold on backing paper. Note the tiny plate number found between the second and third stamps on the top of the pane. The Western Wear stamp booklet is



designed to be folded into thirds. Note the bar code at right. Above is the “front side of the pane of Western wear booklet stamps.

Look carefully to see the scored place for folding between the second and third stamps, and the



fourth stamp and the “cover.” Also, see the Plate number P1111 that is located vertically between the 2<sup>nd</sup> and the 3<sup>rd</sup> stamps on top. Note that each of the digits in the plate number is a different color.

**Above is the back side of the Western Wear booklet stamps.** Note that only eight stamps are on the front, but ten stamps are on the back. The back sides do not have a plate number.

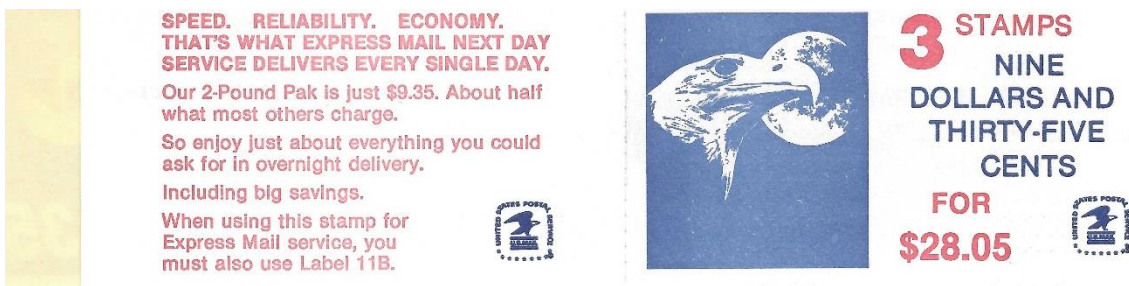
In order to collect a plate number with the two stamps on either side, all the other stamps on the booklet pane (both sides) need to be removed, and then the backing paper (with the two stamps with the plate number between) can be carefully cut with scissors, leaving an eighth inch of backing paper all around the two stamps.

### Three Stamp Booklets



For certain high-denomination stamps, the Post Office issued booklets with a pane of three stamps only.

Below is the front cover and back cover of this booklet.



Below is the front cover and back cover of this booklet. Note that the three stamps are larger than the extended front and back cover, so that the third stamp has to be folded inside the booklet when the booklet is closed.

### Mixed Denomination Stamps on Same Booklet Pane

Here is an example of a single pane from a booklet that has two different denominations of stamps on the same pane of stamps. This pane contains two 6¢ stamps and six 18¢ stamps. Note the large “1” in the selvedge to the right of the top 6¢ stamp. That is the plate number. It is very difficult to find used on cover a 6¢ stamp attached to an adjacent 18¢ stamp. (I have never seen such a cover.)



One other important point: Booklet stamps can be found with 1, 2 or 3 straight edges. It is fun to try to find the same stamp with different straight edges, and in different positions. For example: Take a look at the cowboy hat found in the Western Wear booklet pane on

Page 3. It can be found with two straight edges (upper left corner) or with just one straight edge (on the top.) Try to find these used with the various straight edges!

**Stamp Collecting Clubs for Kids** is a 501(c)(3) organization. Donations are greatly appreciated and if \$10 or more you will be sent a written receipt. You also can donate via PayPal on our website - [www.stampcollectingclubsforkids.org](http://www.stampcollectingclubsforkids.org) or [www.yummystampcollecting.org](http://www.yummystampcollecting.org) which redirects you to the same website.

© Robert W. Martin, 2023

Issue 94