

The PhilateliKid

The newsletter for Stamp Collecting Clubs for Kids (SCCFK)

Collect Stamps (The Most Educational Hobby)

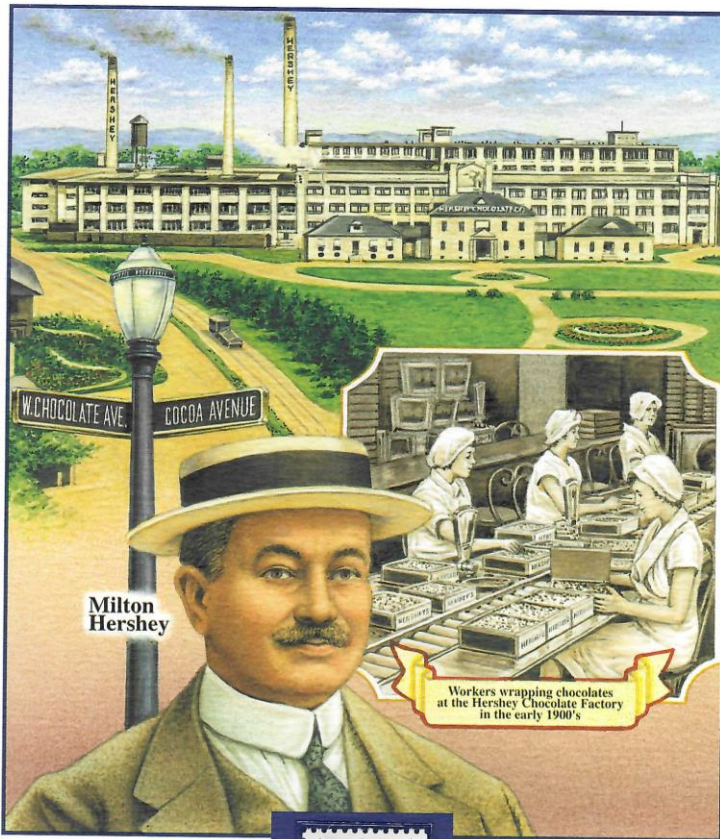
www.stampcollectingclubsforkids.org

April 1, 2021 **Stay Safe Indoors! Collect Stamps!**

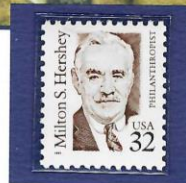
Some interesting collectibles.

Hershey Chocolate Factory Completed

June 1, 1905 • Hershey, Pennsylvania



Milton Hershey



This 32¢ stamp was issued on September 13, 1995, to honor Pennsylvania philanthropist Milton S. Hershey. The stamp was issued in Hershey, Pennsylvania, the site of the famous Hershey chocolate manufacturing plant. Appropriately, the color of the stamp is chocolate-brown.

In June 1905, the Hershey Chocolate Company's new factory in Hershey, Pennsylvania, was completed. Using modern mass production techniques, it was the world's largest chocolate factory and allowed Hershey's to become the first nationally marketed milk chocolate product.

The factory was the culmination of Milton Hershey's dream of making high-quality, affordable milk chocolate. Hershey first established a successful caramel business in Lancaster, Pennsylvania. In 1893, he purchased German chocolate-making equipment at the World's Columbian Exposition in Chicago.

At first, Hershey used the equipment to make chocolate coatings for his caramels. However, he was also determined to perfect the recipe for milk chocolate, which at the time was an expensive luxury that was virtually monopolized by Swiss chocolate makers. By 1900, he found the right formula, and sold the caramel business for \$1 million so that he could concentrate on his chocolate business.

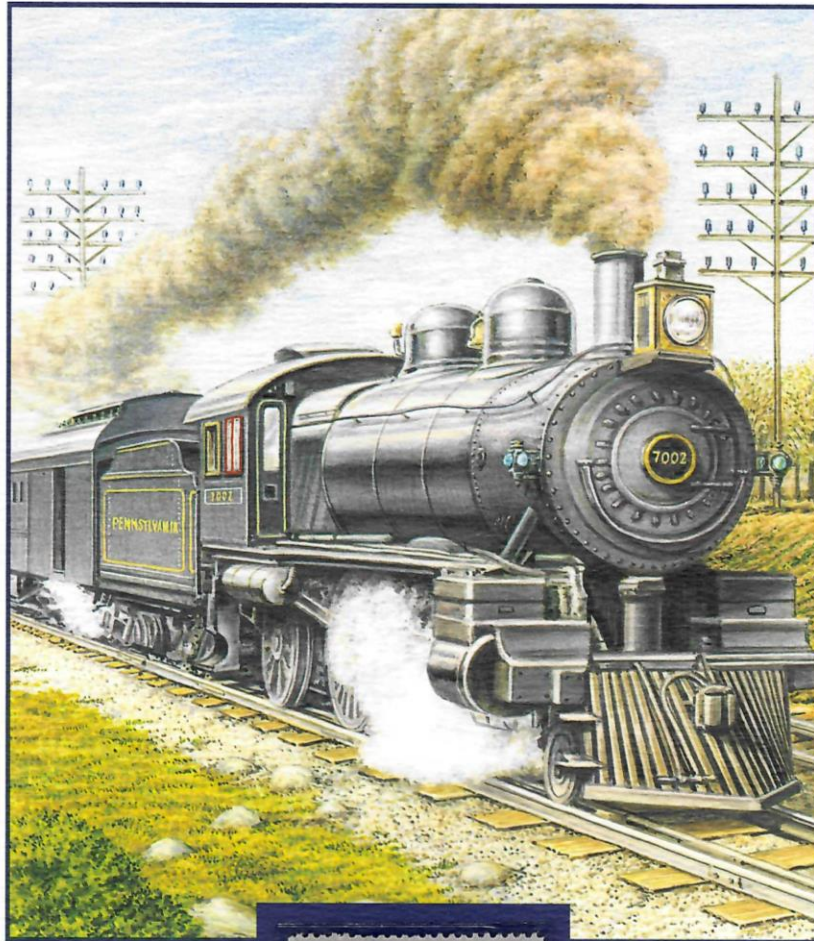
On March 2, 1903, Hershey broke ground on his new factory in Derry Township, Pennsylvania. The factory was convenient to ports that would bring in cocoa beans and sugar, and close to dairy farms that supplied milk. A philanthropist, Hershey built the model town of Hershey around the factory to give his workers a pleasant place to live. His milk chocolate bars soon became a sensation across America.



2005 Centenary Anniversary Commemorative Panels

Pennsylvania Railroad Debuts Fastest Train

June 11, 1905 • New York, New York



On June 11, 1905, the Pennsylvania Railroad debuted a new schedule for the Pennsylvania Special, a passenger train that traveled between New York and Chicago. Completing the journey in a record 18 hours, it was hailed as the fastest long-distance train in the world to that date.

Intercity passenger travel at the turn of the 20th century was almost entirely by train. Many small towns enjoyed regular daily service for both passengers and goods, while a city the size of Chicago saw thousands of trains per day. Some long-distance passenger travel became luxurious, especially with the introduction of Pullman sleeping cars, dining cars and electric lights.

The route between New York and Chicago was one of the most popular passenger services. The two most famous trains on this route were the New York Central Railroad's Twentieth Century Limited and the Pennsylvania Railroad's Pennsylvania Special. Both services offered the fastest available trip between the cities, completing the journey in 20 hours. The Pennsylvania Special became the first to operate the 18-hour schedule.

To add to its status, the Pennsylvania Special set a train speed record by briefly reaching a speed of 127.1 miles per hour in June, 1905.



This 3¢ stamp was issued on May 10, 1944, to honor the 75th anniversary of the first transcontinental railroad. It depicts the "Golden Spike" ceremony at Promontory, Utah, that symbolized the completion of the railroad line linking the east and west coasts of the United States.



2005 Centenary Anniversary Commemorative Panels

Stamp Collecting Clubs for Kids is a 501(c)(3) organization. Donations are greatly appreciated and if \$10 or more you will be sent a written receipt. You also can donate via PayPal on our website - www.stampcollectingclubsforkids.org or www.yummystampcollecting.org which redirects you to the same website.