

# The PhilateliKid

**The newsletter for Stamp Collecting Clubs for Kids (SCCFK)**

**Collect Stamps (The Most Educational Hobby)**

[www.stampcollectingclubsforkids.org](http://www.stampcollectingclubsforkids.org)

January 1, 2021     **Stay Safe Indoors! Collect Stamps!**

## Philatelic fun

Once in a while a person can get “stuck” in our hobby. That occurs when there does not appear to be anything new, or anything that is affordable in the area that you are collecting. Fortunately, there are many interesting areas of stamp collecting that you may not have thought about. This month we are going to venture into something that is NOT stamps, but is closely related to stamps, namely postmarks and cancellations,



King Edward VIII of the United Kingdom reigned from January 20, 1936 to December 11, 1936, the date of his abdication. This postmark is dated March 30, 1937, over 3 months after his abdication.

First, let's be sure we all understand the difference between a postmark and a cancellation. A postmark contains **information**. Typically, a postmark contains the date, and the city and state where the postmark was applied. In years gone by, postmarks also frequently contained the date the item was postmarked, or at least AM or PM which provided approximate time of mailing.

It used to be that a postmark indicated the place where the item entered the mailstream, in other words, where the sender no longer had the envelope, but the post office took control. That is no longer correct, because, for example, if I mail an envelope from Kihei, Hawaii to Chicago, Illinois, the postmark will say “Honolulu.” That is wrong in several ways, but for starts Honolulu is not just the wrong city, it also is the wrong county, and it is not even located on the same island as Kihei, which is on Maui. (Honolulu is on the island of Oahu.)

Slogan cancel “Worlds Greatest Hobby”

A cancellation is a mark made on the stamp so that the stamp cannot be reused. Very common types of cancellations were simply wavy lines, but





there have been very creative types of cancels featuring a running chicken, a star, and concentric circles. Sometimes a postmark was used to be the cancellation, which occurs when the postmark itself is placed onto the stamp. Occasionally the postmark is perfectly centered onto a stamp so that all the information was still present once the stamp was soaked off the envelope. Those types of postmarks are called “Socked on the Nose” or abbreviated “SON.”

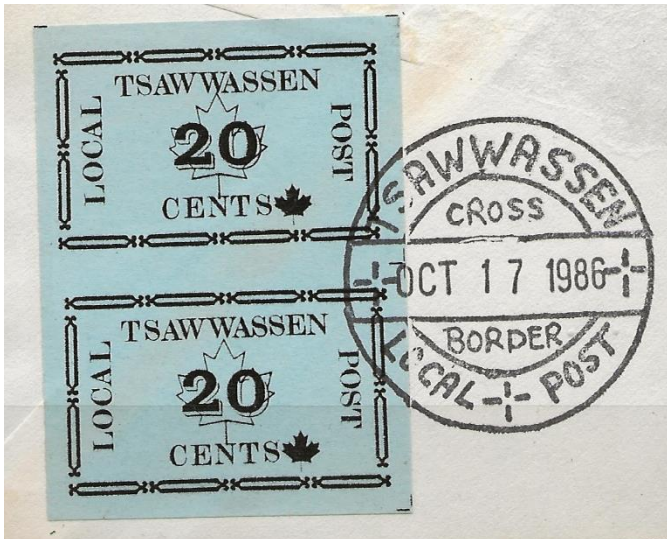


Some cancellations include a slogan. Thousands of slogans exist such as “Always Use Zip Code” and “Pray for Peace.”

Slogan cancel containing a lot of information:  
Ameripex '86 World's Fair of Stamps 5/22 - 6/1  
Chicago IL



Slogan cancel from Belgium in 2 languages King Leopold III. His first wife, Queen Astrid, died in an automobile accident in 1935, leaving him with 3 children, Josephine-Charlotte, Baudouin, and Albert. Baudouin became King upon the abdication of Leopold III on July 16, 1951. When King Baudouin died in 1993 without any children, his younger brother became King Albert II. King Albert II reigned until July 16, 2013 on which date, at age 79, he abdicated due to health reasons. This means that King Leopold III (featured on the above stamp) abdicated, had two sons who became King, and after the older died, the younger became King and also abdicated!



**Tsawwassen, British Columbia, Canada.** The southern border of this city is the international border with the United States. Here are two “Local Post” stamps with a postmark that says “Cross Border.”

Collecting postmarks and cancellations is quite a bit of fun, and often is very inexpensive. For more information contact the Post Mark Collectors Club (PMCC) at [www.postmarks.org](http://www.postmarks.org)

### Answers for last month’s quiz

1. What does SCCFK stand for? A. Stamp Collecting Clubs for Kids. Note: “Clubs” and “Kids” must be plural to be correct.
2. Where is SCCFK headquartered? A. Kihei, (Maui) Hawaii, USA (Just Hawaii is okay.)
3. Regarding time zones, what does HST stand for? A. Hawaii Standard Time.
4. Name the island where Honolulu is located. A. Oahu
5. Name the island where Pearl Harbor is located. A. Oahu
6. What is the 2-letter designation used by the Postal Service for Hawaii? A. HI
7. What was the population of the State of Hawaii in 2019? A. 1.424 million
8. How many states have a population that is less than Hawaii (as of October 2020)? A. 10
9. What is the cost to mail up to a 1-ounce first-class envelope from Honolulu, Hawaii to New York City? (As of October, 2020) A. 55¢, or 1 Forever stamp.
10. What was the cost to mail a ½ ounce or less first-class envelope from Honolulu to New York City in 1852? (Hint: This is about \$4.50 in current money.) A. 13¢
11. What was Hawaii before it was a state? A. A Territory of the United States
12. Immediately prior to that, what type of government was Hawaii? A. A Republic.
13. Immediately prior to that, what type of government was Hawaii? A. A Kingdom.
14. What country’s stamps were used by Hawaii from June 14, 1900 to the present? A. United States
15. The City of Honolulu’s governmental leader is called “Mayor.” What is the governmental leader of the **County** of Maui called? A. Mayor
16. After their vacation is over, visitors to Hawaii often say that they are returning to “the States.” What do the people of Hawaii think of a person who says that? A. They think the visitor is ignorant of the fact that Hawaii is a State.
17. What State has its own language (in addition to English) and what is that language? Hawaii has the Hawaiian language.
18. What State of the United States has a Palace where a king and queen actually lived, and what is the name of that Palace? A. Hawaii has Iolani Palace.

19. What is the nickname for the first four stamps issued by Hawaii? A. Missionaries.
20. Who was the first King featured on a stamp of Hawaii? He was the fourth King of Hawaii. Scott # 27, 28, 29, & 31 A. King Kamehameha IV
21. What years did he reign? A. 1855- 1863.
22. When he died at age 29, what relationship to his did his successor have? (His successor reigned from 1863 until his death in 1872 at age 42 ) A. His brother
23. What was his name? Scott # 32 A. Lota Kapuāiwa Kalanimakua Aliʻiōlani KalanikupuapaʻĪkalaninui
24. What was his name as King? A. King Kamehameha V.
25. There was a TV show titled “Hawaii Five Oh.” (50) What does the Five Oh refer to? A. Hawaii was the 50<sup>th</sup> state to join the United States.
26. On July 4, 1959, the Post Office issued a stamp featuring a U.S. flag, Scott # 1132. How many stars are on the flag? A. 49
27. On July 4, 1960, the Post Office issued a stamp featuring a U.S. flag, Scott # 1153. How many stars are on the flag? A. 50
28. On August 21, 1959 the Post Office issued a 7¢ stamp featuring an Alii Warrior. What is the Scott Catalogue number for that stamp? A. C55
29. On October 24, 2002 the Post Office issued a souvenir sheet featuring four “stamps on stamps.” Above the stamps (in the selvedge) is a reproduction of an envelope known as the “Dawson cover.” On that cover, stamps from two different countries are used (“mixed franking”). What are those two countries? A. Hawaii and the United States
30. An 11¢ air mail stamp was issued by the Post Office in 1972 commemorating National Parks Centennial, featuring a statue. What is the name of the statue, and at what Park is it found? A. The statue is Kii, located at the City of Refuge National Historical Park, Hawaii. Note: To be correct, the word “Historical” must be in the name of the Park. See below for an acceptable alternative name for the Park.
31. The National Park in question #30 above was renamed in 1978. What is its current name? A. Puʻuhonua o Hōnaunau National Historical Park
32. The official state animal for Hawaii is an endangered species. It is featured on the mini-sheet Scott 3105. What is its name? A. Hawaiian Monk Seal. Note: “Hawaiian” is part of the name.
33. On April 14, 1982 the Postal Service issued a sheet of 50 different stamps featuring State birds and flowers. Scott 1963 has the wrong color for the state flower. What color should it be? A. Yellow, not pink.
34. Scott 1963 features the Hawaii state bird, the Hawaiian Goose. In 1951 it was estimated that only 30 were alive in the wild, and 13 in captivity. It was declared an endangered species in 1967. With conservation, it has now grown to about 2,500 to 3,000 in the wild. What is the correct name for the Hawaiian Goose? A. Nene (pronounced nay-nay)
35. Scott 1682 features the State flag of Hawaii. In the upper left corner is a flag of a foreign country. What country and what is the name of that flag? A. United Kingdom, Union Jack
36. The State flag of Hawaii has 8 horizontal stripes. What do they represent? A. The 8 major islands of Hawaii.
37. In 1871 Hawaii featured a woman on a 1¢ stamp. Scott #30. Who was she? A. Princess Victoria Kaiulani, who was 3<sup>rd</sup> in line of succession to the throne, but died at age 27. Her two brothers were Kings of Hawaii. (Kamehameha IV and Kamehameha V)

38. Who was the first woman featured on a stamp of the United States, and what year? A. Queen Isabella, Scott 234, 241, 244 all in 1893.
39. On August 26, 1936, 89 years after the issue of the first U.S. stamps, a fourth woman appeared on a U.S. stamp. Who was she? A. Susan B. Anthony
40. Who were the three women who appeared on U.S stamps prior to her? A. Queen Isabella, Martha Washington, Pocahontas.
41. Who was the first child commemorated on a U.S. stamp? A. In 1937 Virginia Dare, Scott 796

Stamp Collecting Clubs for Kids is a 501(c)(3) organization. Donations are greatly appreciated and if \$10 or more you will be sent a written receipt. You also can donate via PayPal on our website - [www.stampcollectingclubsforkids.org](http://www.stampcollectingclubsforkids.org) or [www.yummystampcollecting.org](http://www.yummystampcollecting.org) which will redirect you to the same website.

© Robert W. Martin, 2021

Issue 73