

# The PhilateliKid

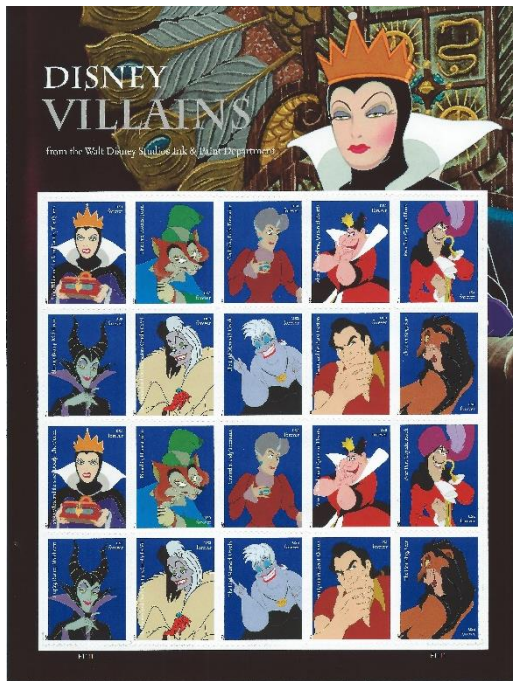
The newsletter for Stamp Collecting Clubs for Kids (SCCFK)

Collect Stamps (The Most Educational Hobby)

[www.stampcollectingclubsforkids.org](http://www.stampcollectingclubsforkids.org)

August 1, 2017

## Stamp of the Month



Currently available at your local post office.

(Reverse Side)

## Does your collection contain damaged stamps?

E. Rawolik is a *nom de plume* used by several different stamp collectors who anonymously choose an advertiser in *Linn's Stamp News* ("Linn's") and order the mixture which is being advertised. Because more than one person actually does this, the E. Rawolik's are identified only by a Roman numeral after the name, such as E. Rawolik VI.

This is the way it is done: A person places a classified ad in Linn's, offering a mixture of stamps for a specific price. E. Rawolik responds to the ad, mailing the payment. When the mixture of stamps arrives, E. Rawolik first removes any damaged stamps, then looks up the catalog value of the remaining stamps. E. Rawolik then writes an article for publication in Linn's, describing the ad, the person making the ad, what was found, and the catalog values. The cost is then divided by the total catalog value resulting in a percentage, which is published along with some other statistics.

For example, an ad states that the mixture has 100 stamps and costs \$10.00. E. Rawolik orders the mixture and in his opinion 4 stamps are damaged and they are removed. In this example, that leaves 96 undamaged stamps. The catalog value of each stamp is looked up, then the total of all the catalog values (total value) is the denominator of the fraction, with the cost (\$10.00) being the numerator. Let us say that the total of all catalog values for the 96 stamps is \$170.00.  $\$10 \div \$170.00 = 5.88\%$ . That means that on the average, each stamp cost 5.88% of catalog value.

This brings up an important point. How damaged does a stamp have to be to be totally disregarded? Just about every stamp collector has some stamps in his collection that are less than pristine, and sometimes called a “space filler.” However, sometimes a stamp is so lightly damaged, that unless magnification is used, no damage can be determined. An example of this type of minor damage would be a thin, if significant considered by most to a damaged stamp. But what if the thin is just on the tip of just one perforation. Perhaps the stamp is off center – how much off center is “damaged?” Or perhaps the stamp is heavily cancelled. (How heavy is it? – Your decision as to whether it is heavily cancelled may be quite different from mine.)

To many collectors, a slightly damaged stamp is not just a space filler, but a perfectly fine collectible item. In fact, a brief look at recent auction catalogues containing 19<sup>th</sup> century stamps, a high percentage of the stamps listed have flaws. Many collectors eagerly seek those stamps, and know they are getting a better price than if the stamp had been without flaws. A look at stamp exhibits quickly demonstrates that many stamps and covers that are shown in exhibits are flawed.

Suppose one of those 4 “damaged stamps” has a catalog value of \$80, and the other three each cataloged at \$50 totaling \$230. This is not uncommon because it is often that higher valued stamps are collected in slightly damaged condition because they are very rare in “perfect” condition, and accordingly more expensive. Finally, suppose that the value of the damaged stamp is only 1/2 of catalog value. Adding ½ of \$230 (\$115) to the value of the undamaged stamps results in a total value for all 100 stamps of \$285. That would bring the average cost of each of the 100 stamps to be ( $\$10 \div \$285$ ) to be 3.51%.

So, depending on how fussy you are, the bargains may be even better than E. Rawolik reports them to be.

Final note: E. Rawolik is “kiloware” spelled backwards. “Kiloware” is a philatelic term for stamps purchased in bulk.

What do you think? Thoughtful comments are welcomed and will be published, so please feel free to write! (150 words or less, please.) Mail it to Robert W. Martin, P.O. Box 1809, Kihei, Hawaii 96753-1809. It should be written as if the reader knows nothing about your topic, so beginners can understand it.

Visit our website at [www.stampcollectingclubsforkids.org](http://www.stampcollectingclubsforkids.org) or [www.yummystampcollecting.org](http://www.yummystampcollecting.org)

**Stamp Collecting Clubs for Kids is a 501 (c) (3) organization. Donations are needed and are greatly appreciated and if \$10 or more are provided written receipts. You also can donate via PayPal on our website.**